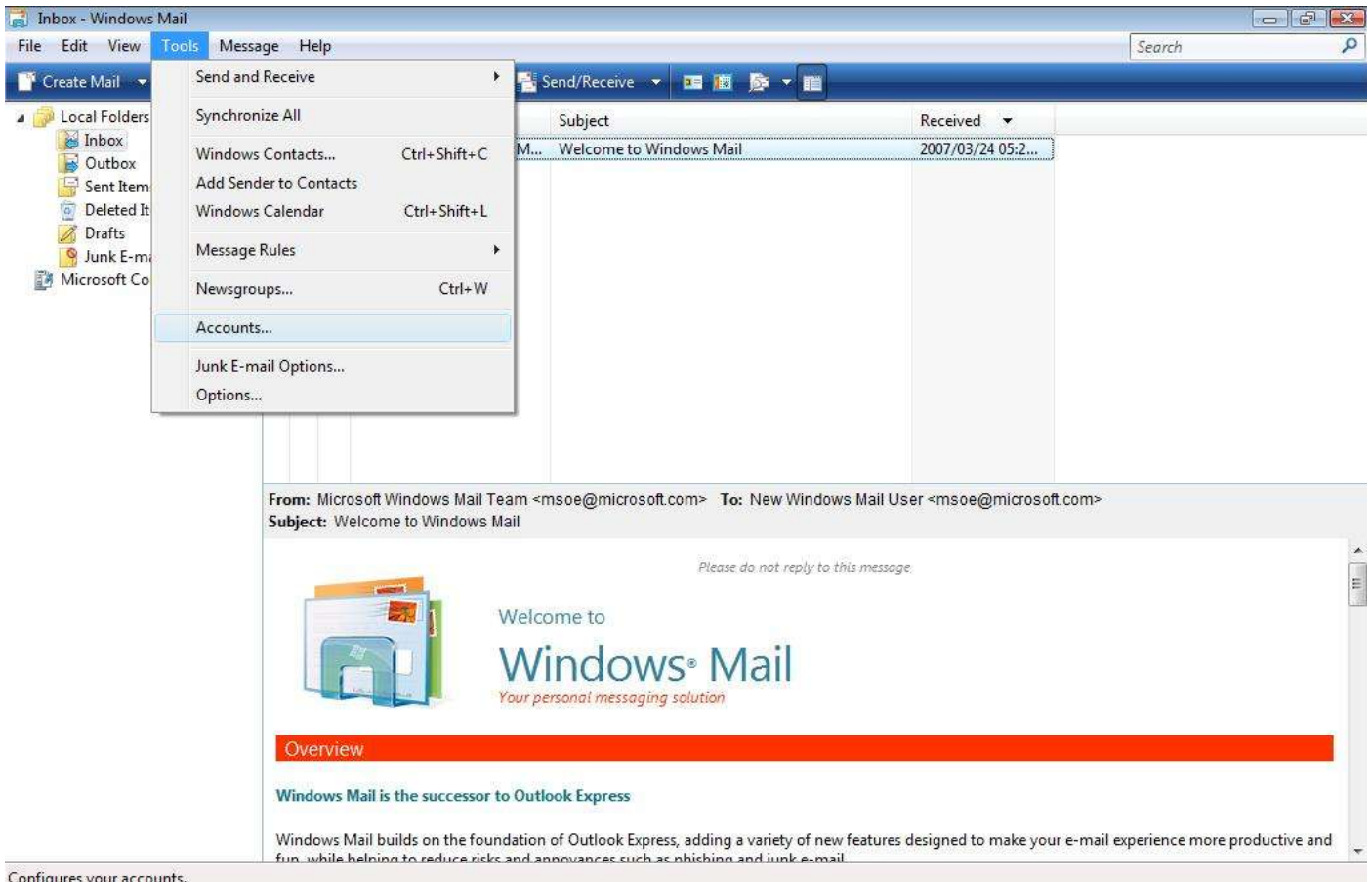
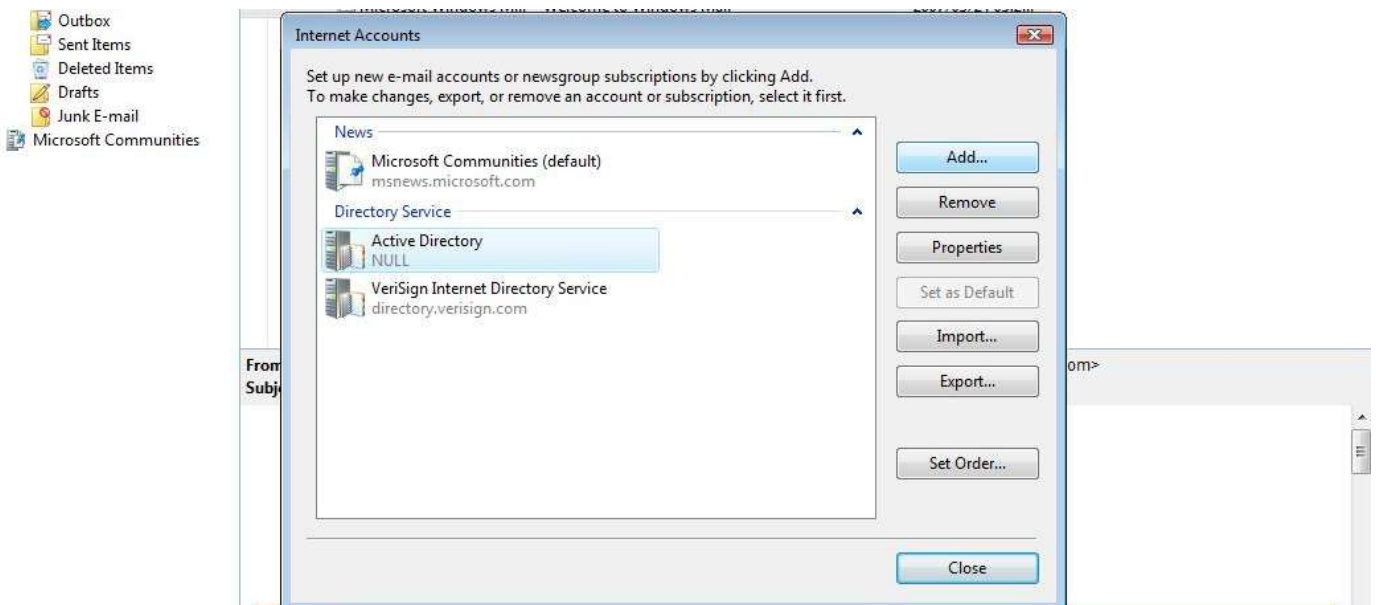


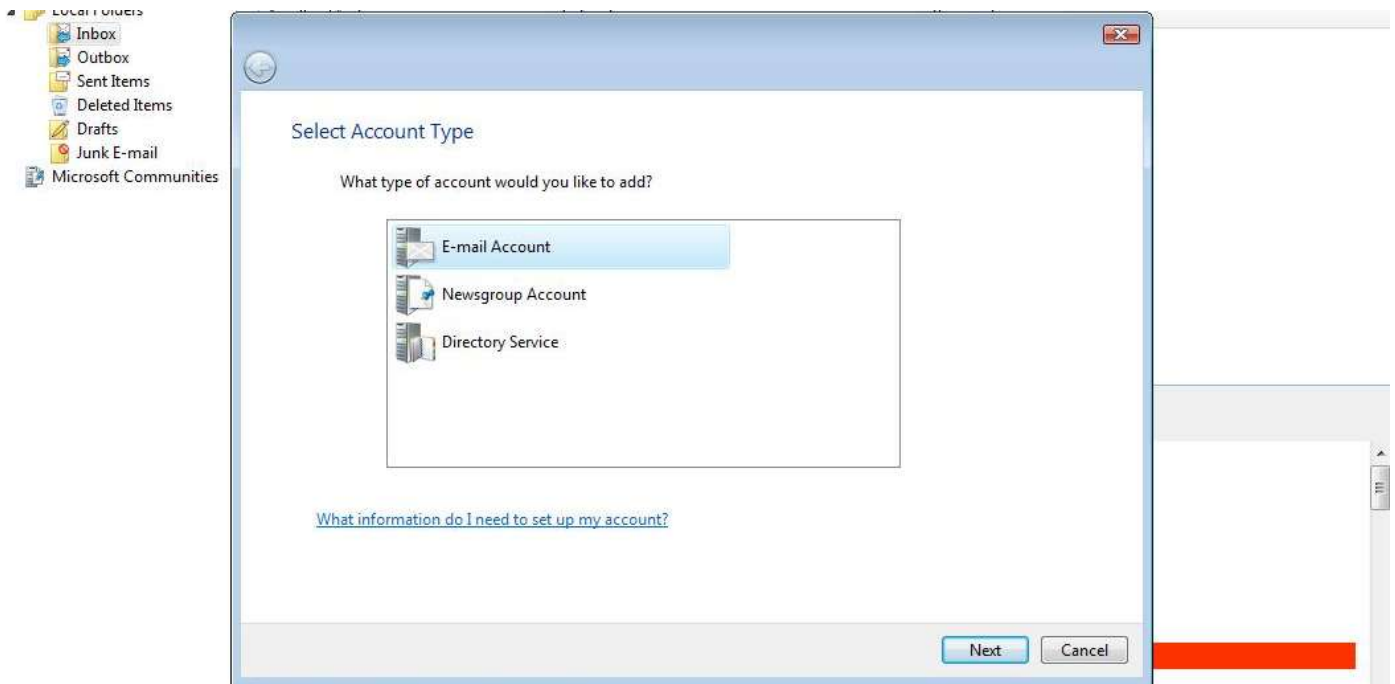
Windows Mail Setup – Linux Hosting:



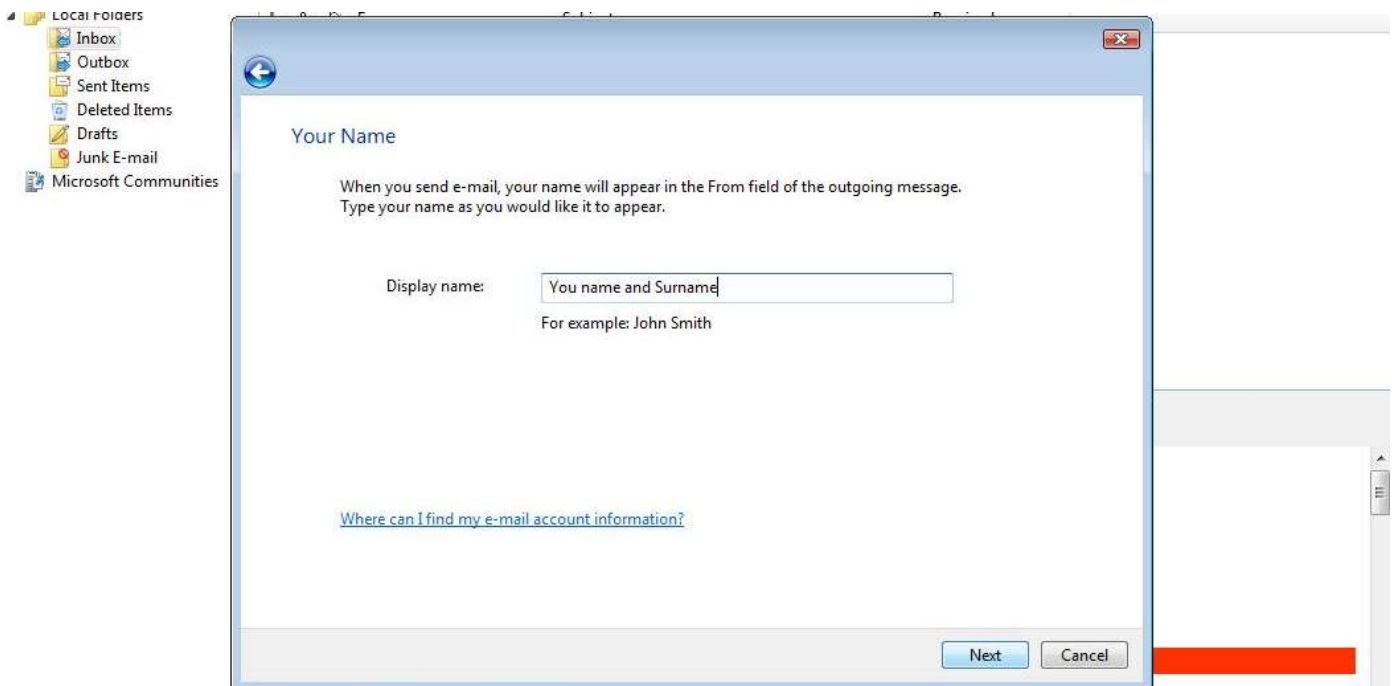
Open Windows Mail. Once opened, go to the TOOLS menu and click on ACCOUNTS...



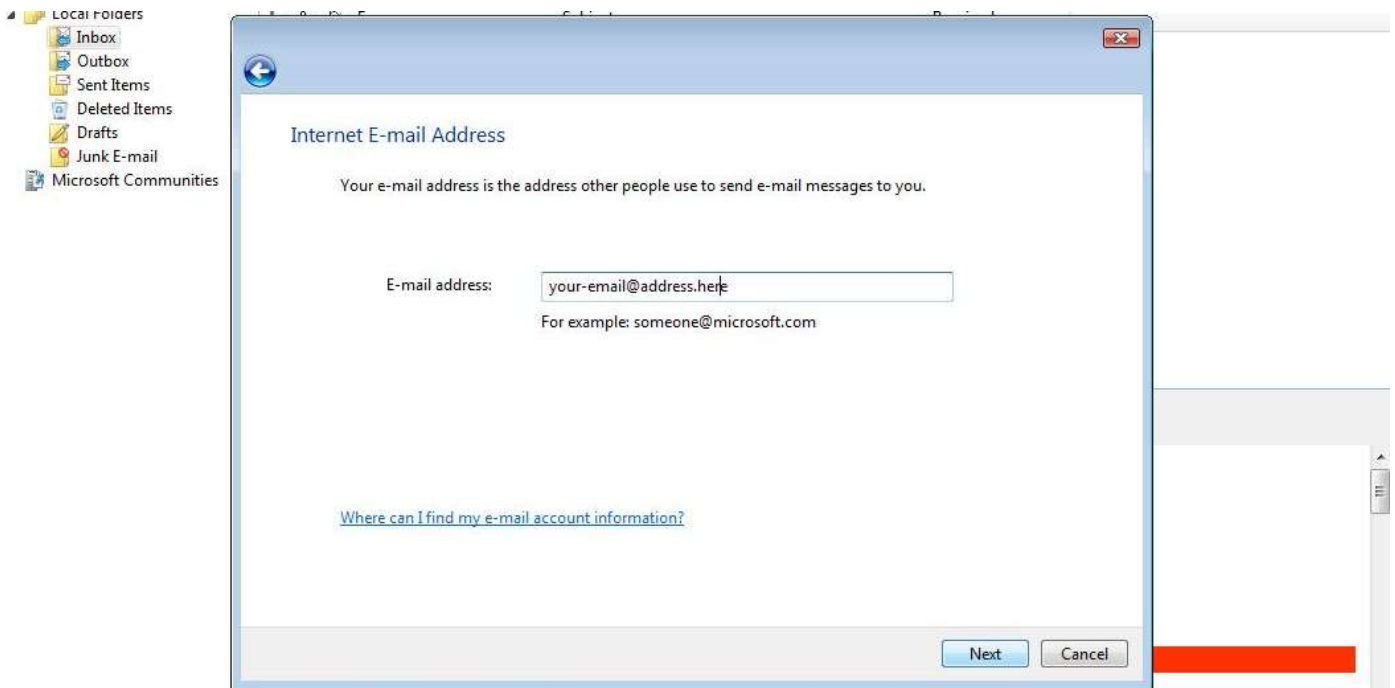
Once the next screen opens, click on the ADD button. This will start the Account Setup Wizard.



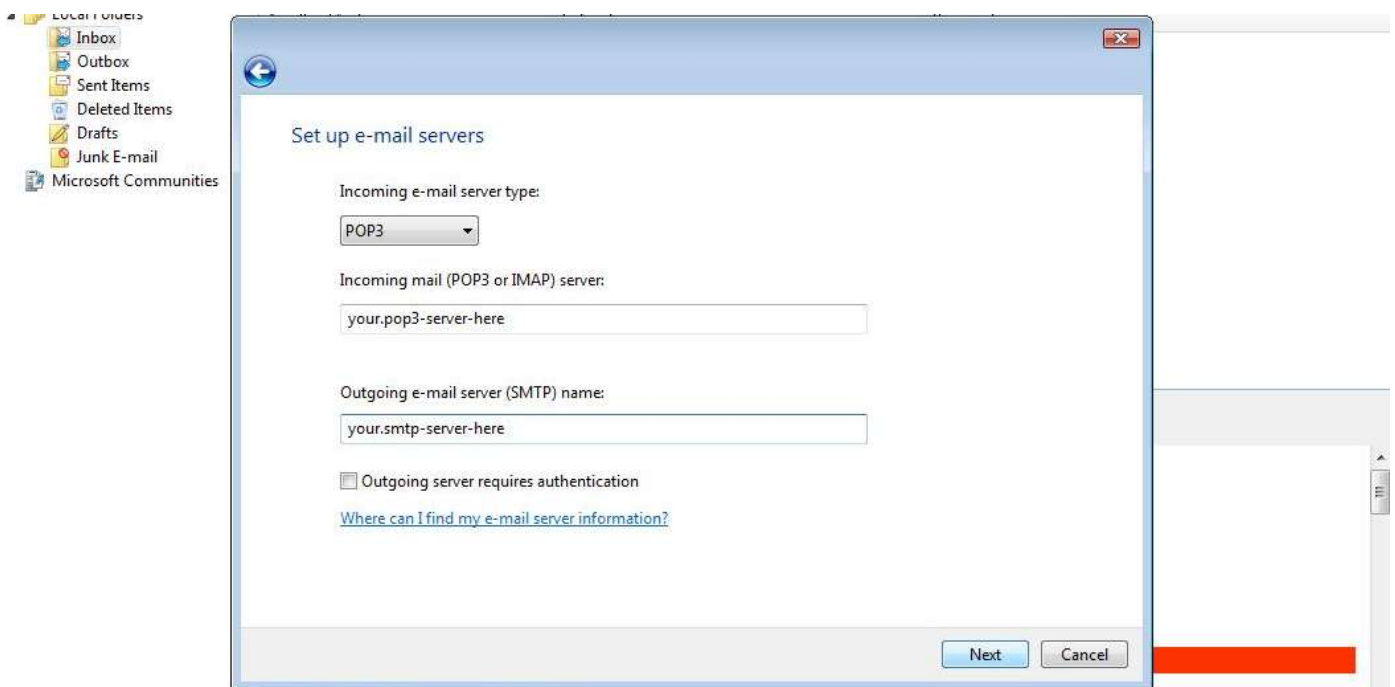
Choose to create a new 'E-mail Account' then click 'Next'.



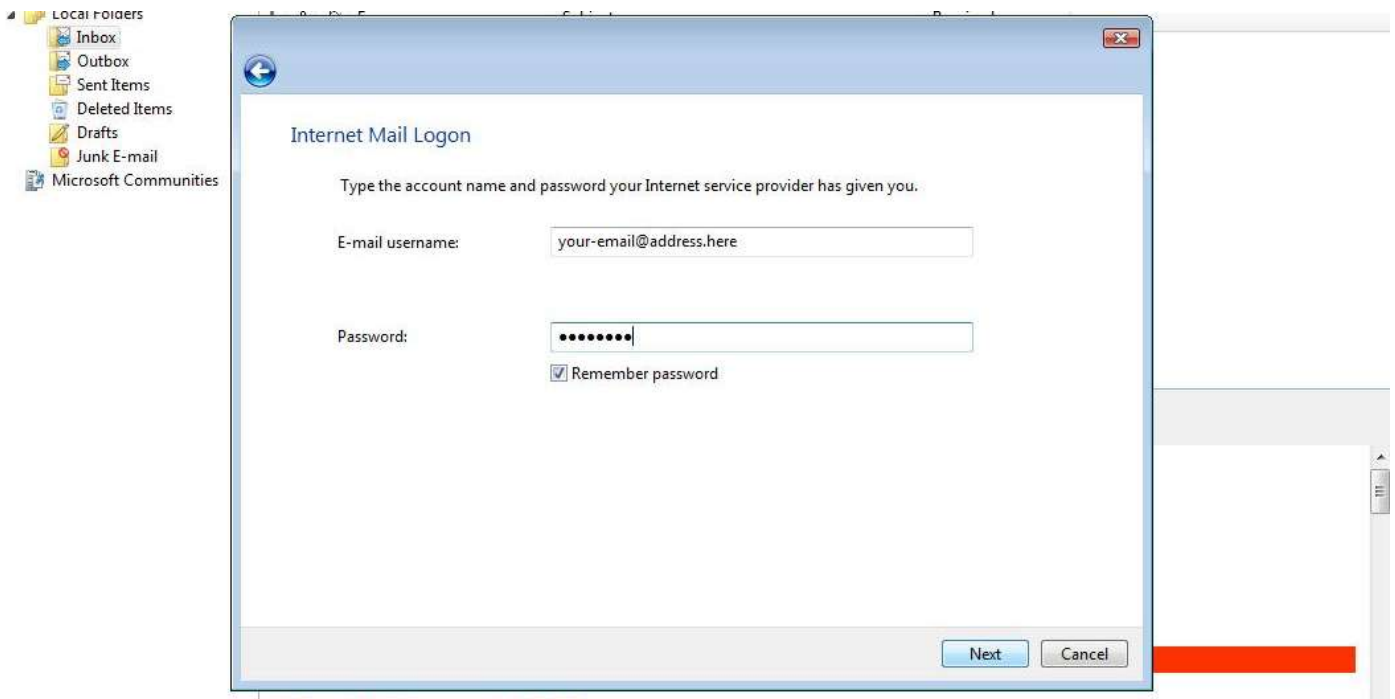
On enter your name as you would like it to appear when sending mails (Eg. John Doe) and click next thereafter.



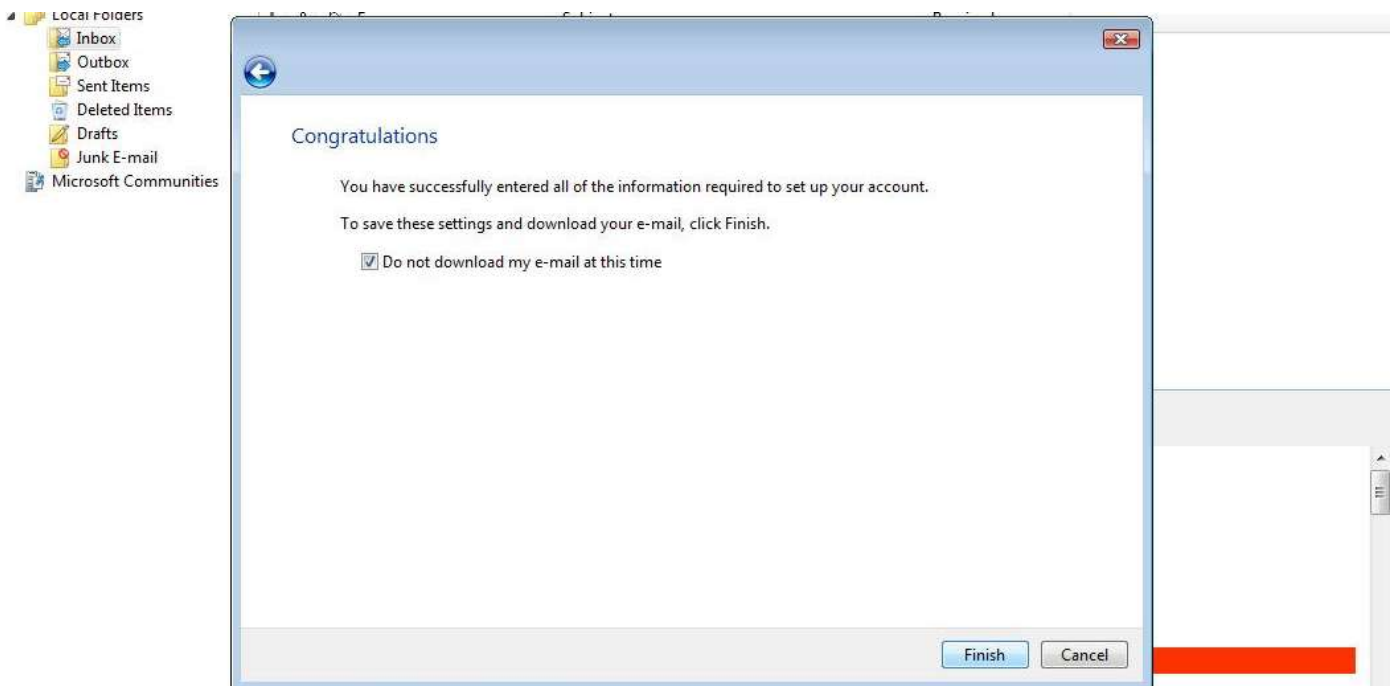
Enter in the email address issued to you (this is found in your documentation) and then click 'Next'.



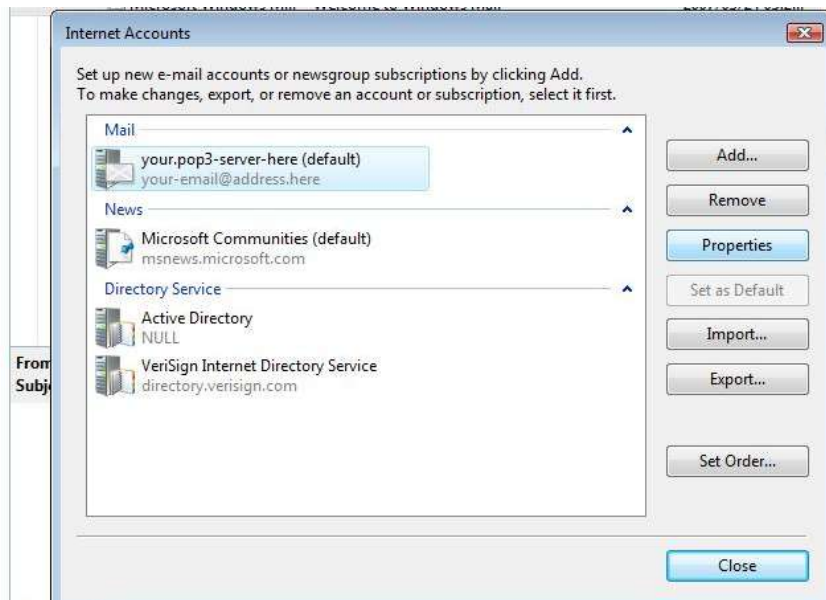
On this screen, be sure to select your Incoming e-mail server type as 'POP3', enter your mail server details (Eg. mail.domain.com) and then click next.



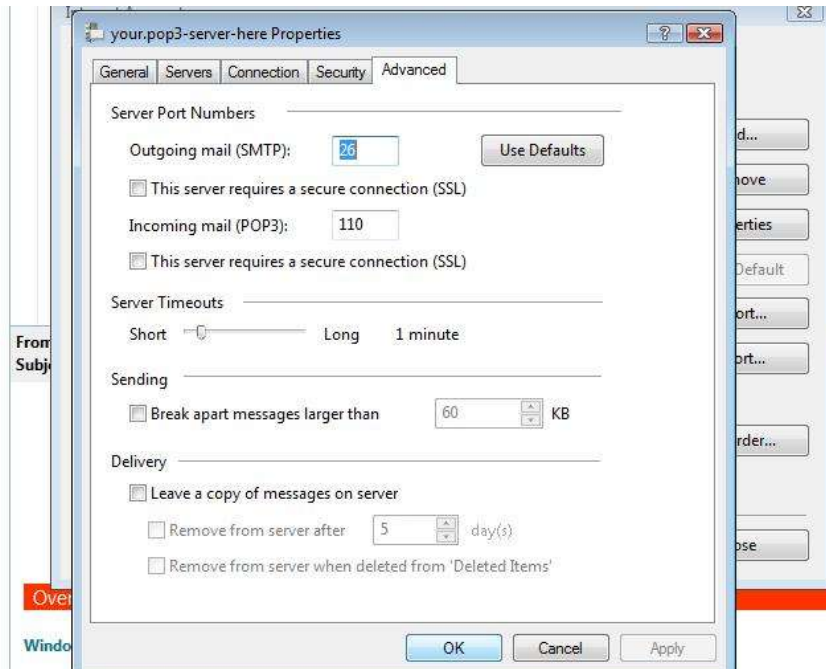
Enter in your username (this will be your email address) and your password and click next.



Be sure to check the 'Do not download my e-mails at this time' box and then click on 'Finish'.



Now, select your new mail account and set it as your default by clicking 'Set as Default' (If it is not currently your default mail setting). Then, click the 'Properties' button.



In the newly opened window, select the 'Advanced' tab and change the Outgoing server port from the default (25) to port 26. Click 'Apply' and then 'OK' to exit the window. You may now also close any other setup screens which are still open and continue to use your Windows Mail, as per usual.