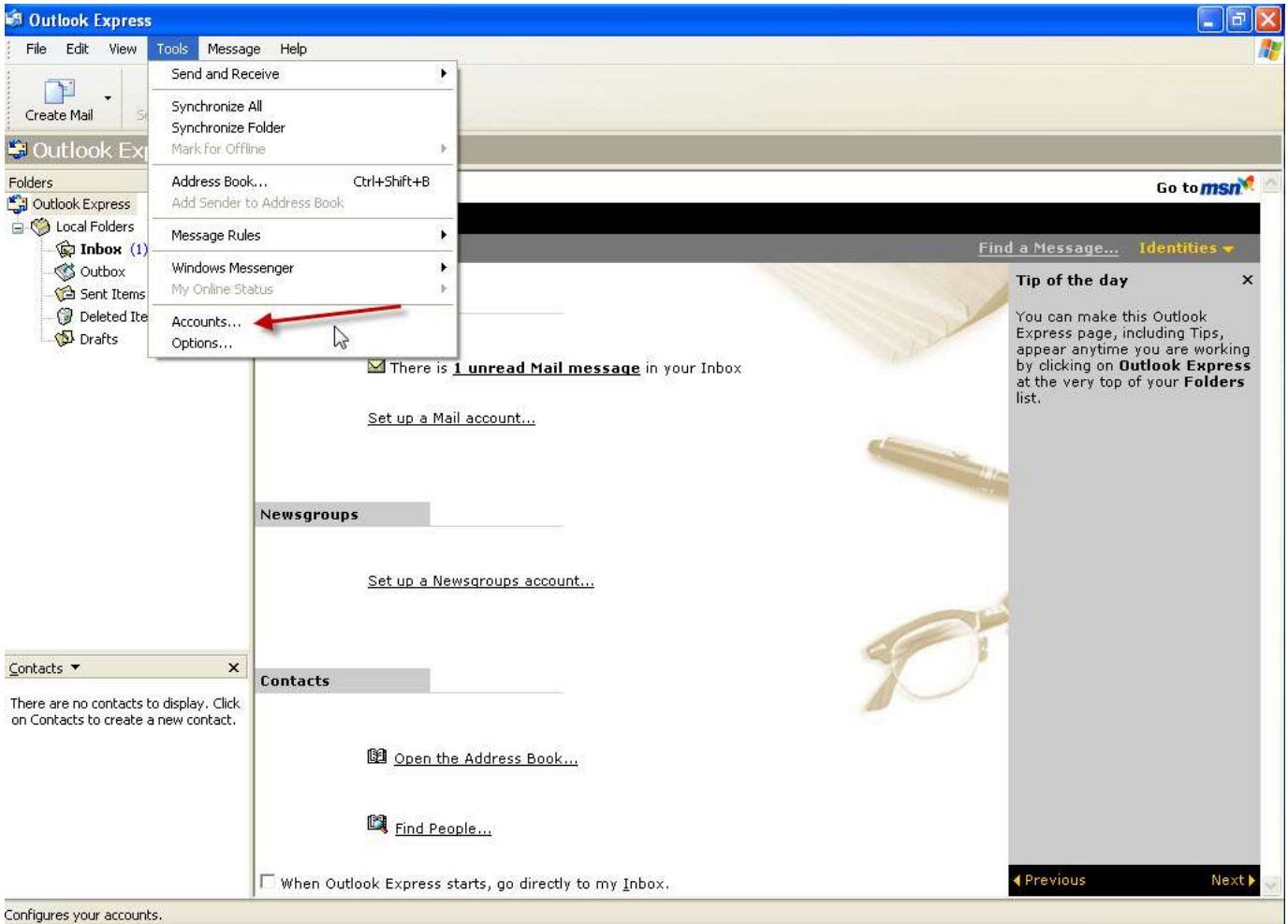
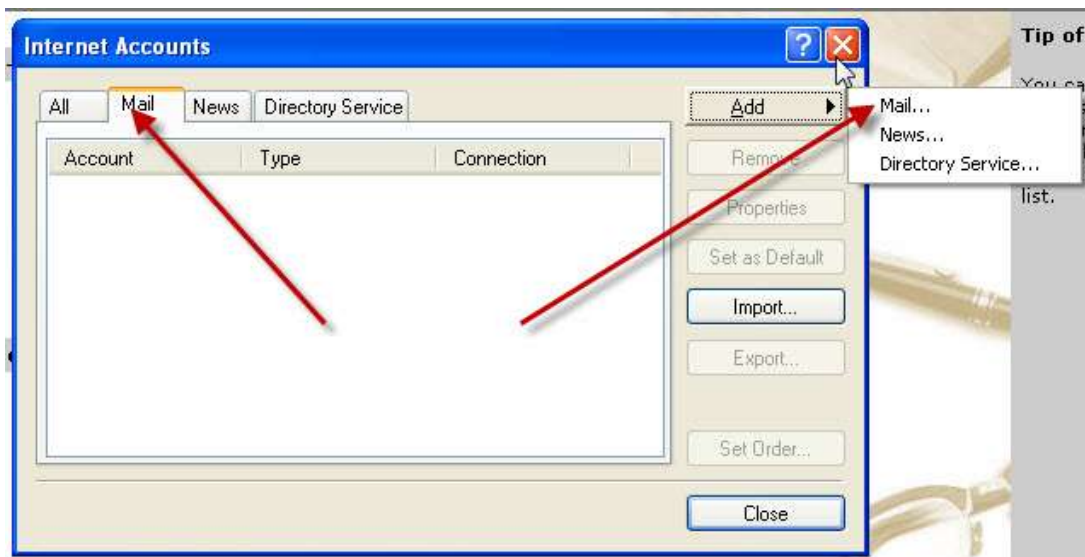


Outlook Express Setup – Linux Hosting:

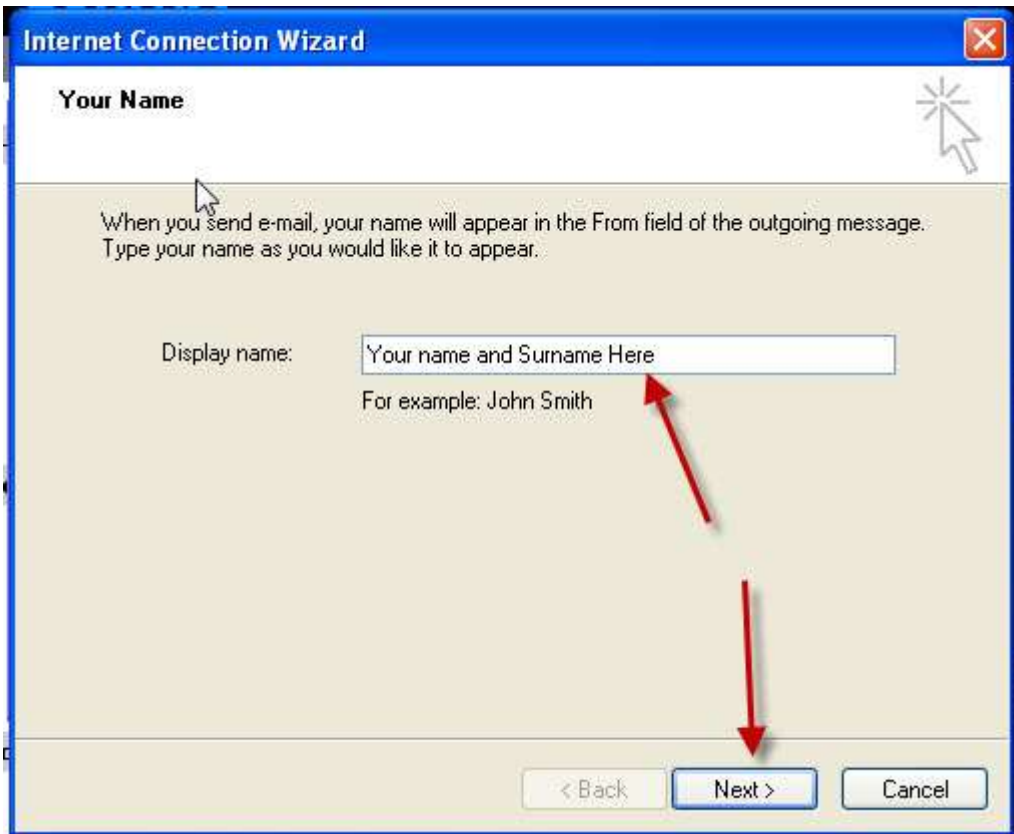


Open Outlook Express. Once opened, go to the TOOLS menu and click on ACCOUNTS...

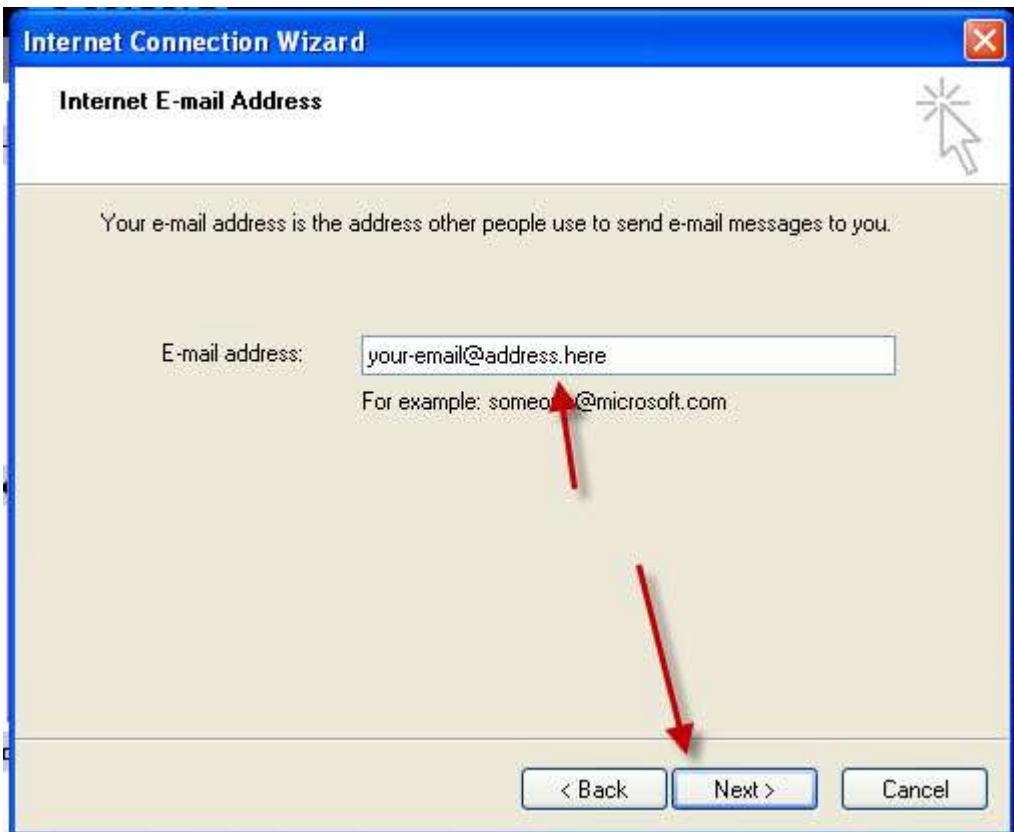


Once the next screen opens, click on the MAIL tab at the top and then on ADD on the right hand side and select the first option, MAIL ...

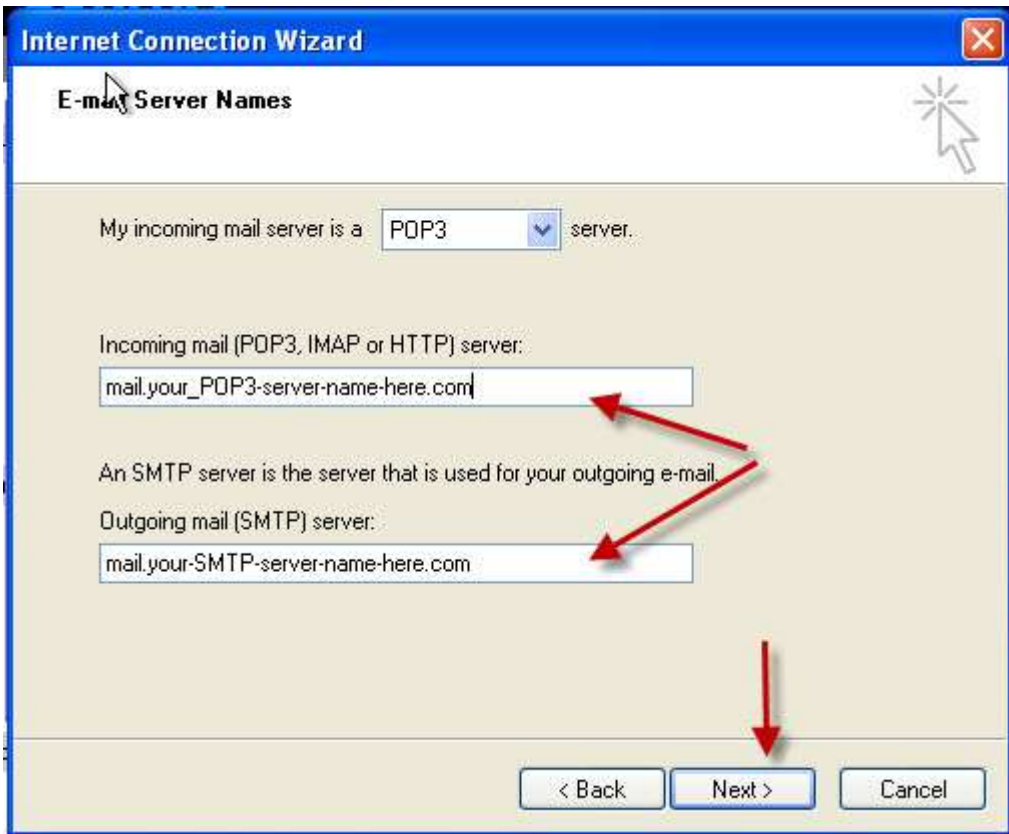
This will start the New Account Setup Wizard.



On the first screen enter your name as you would like it to appear when sending mails, ie: John Doe and click next thereafter.



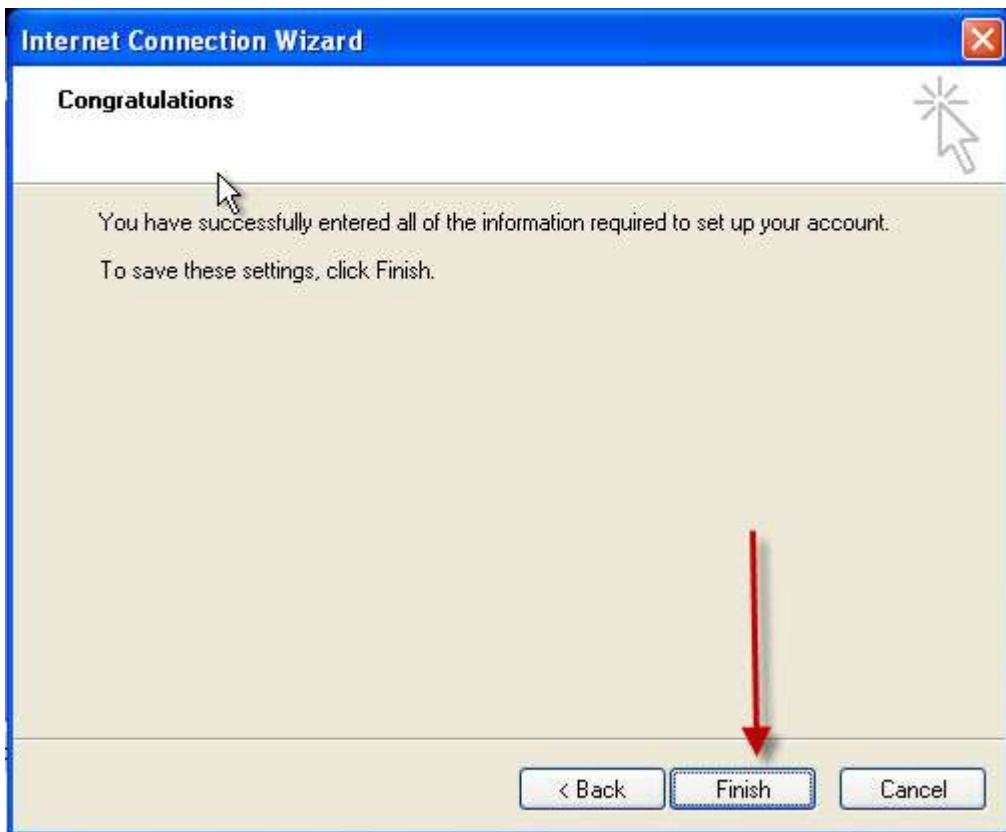
On this screen enter your e-mail address as provided in your documentation and click next when finished.



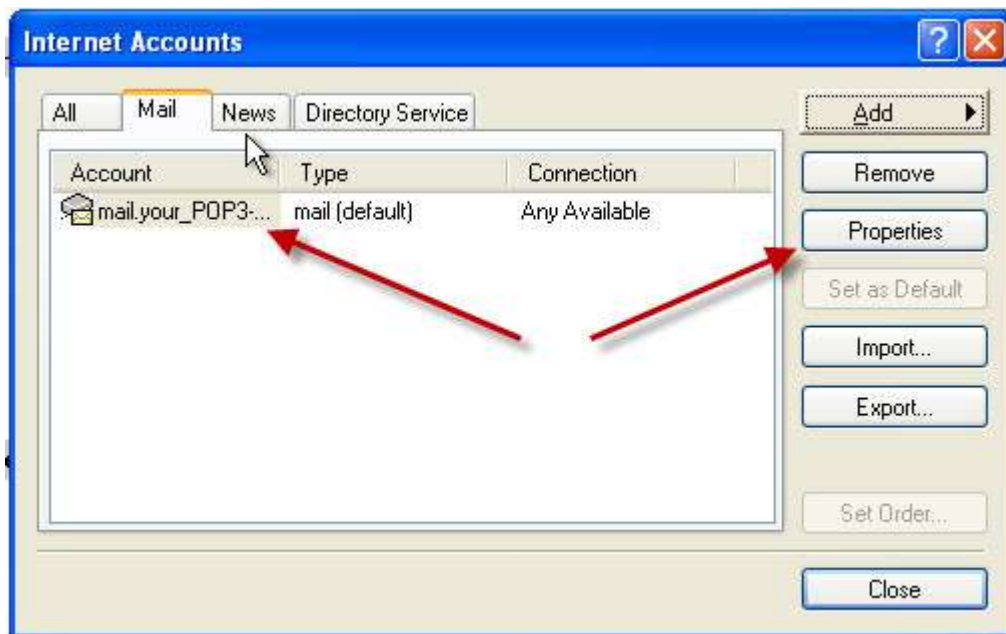
Make sure that POP3 is selected at the top as your mail server. Go ahead and enter your POP3 mail server in the first block and your SMTP server in the bottom block (refer to your Setup Documentation). Click Next.



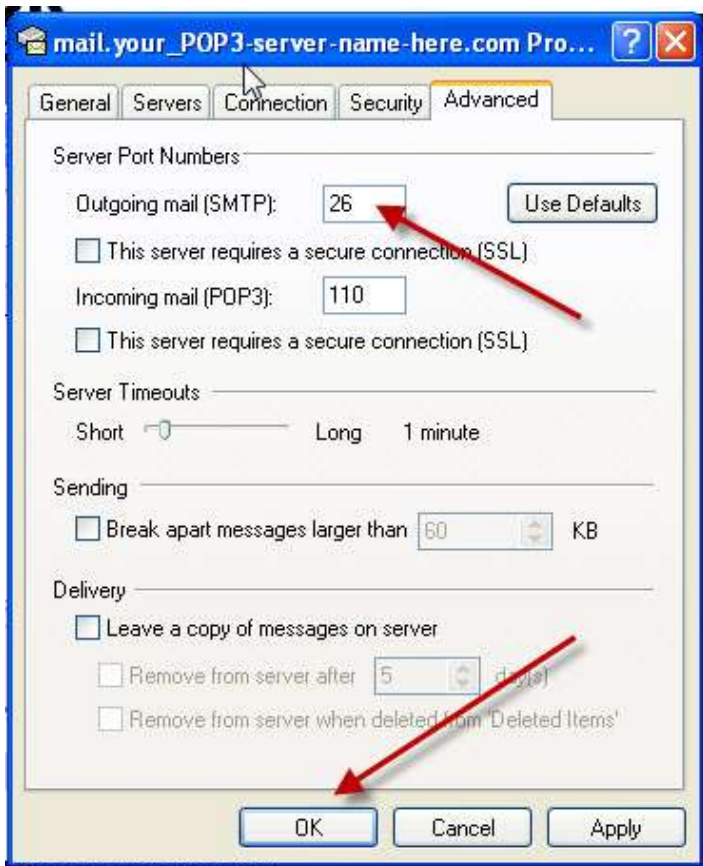
On this screen, at the Account Name box, enter your e-mail username and provided in the Setup Documentation, as well as your given password in the password box. Make sure the "REMEMBER PASSWORD" box is ticked and click next when finished.



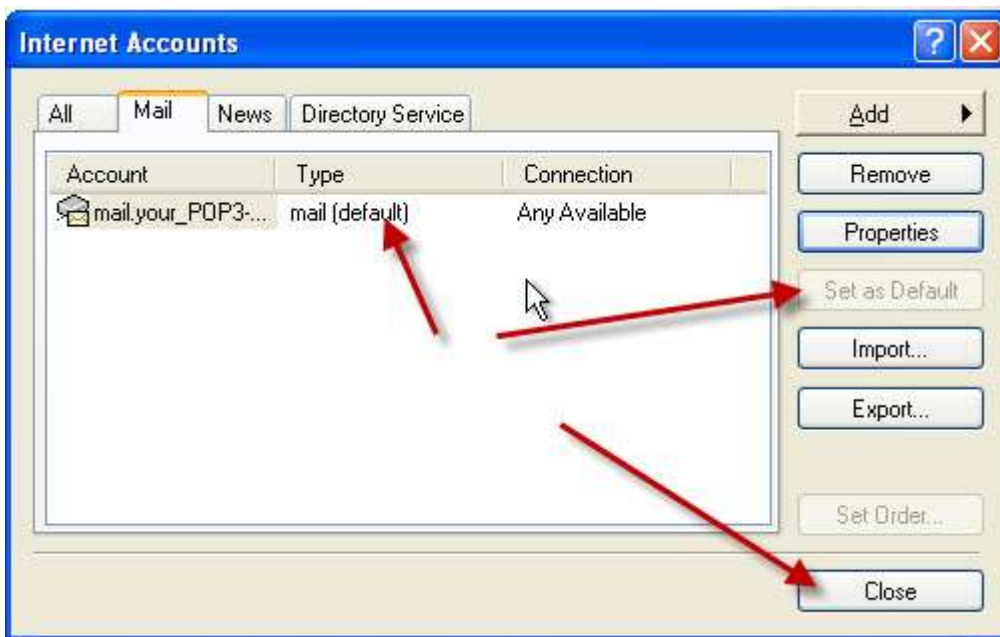
Click on Finish to complete the wizard. Make sure you follow the steps below as there is still a few settings to change.



Make sure your name account is selected and then click on PROPERTIES.



Now click on the ADVANCED tab. Change the OUTGOING MAIL (SMTP) port from the standard 25 to 26. Now click on OK to close the screen.



If this is the first and only account you have, it should already be marked as your DEFAULT account. If not, select this account and click on the "SET AS DEFAULT" button. After this you can click on CLOSE and your new account should be ready for use.