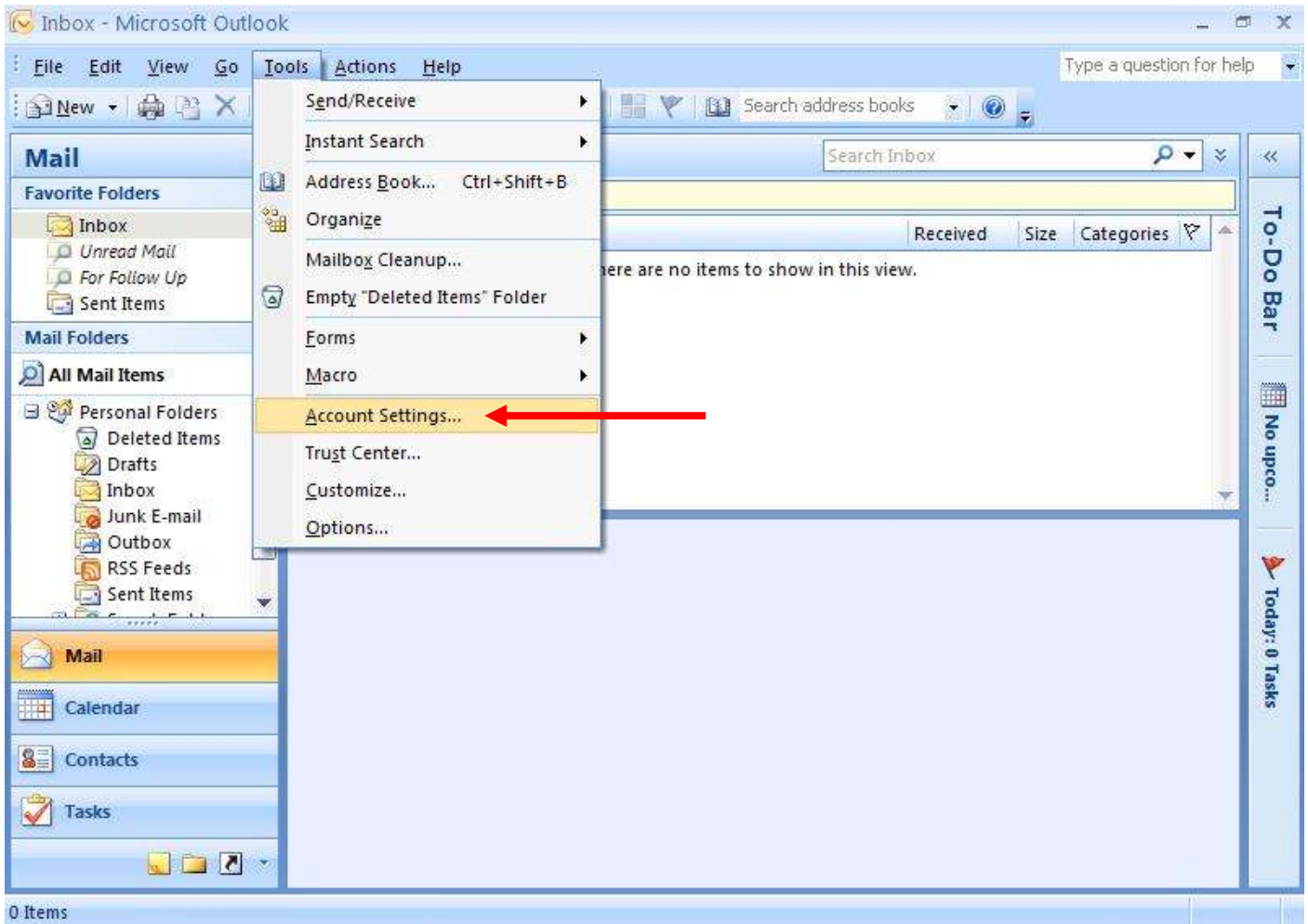
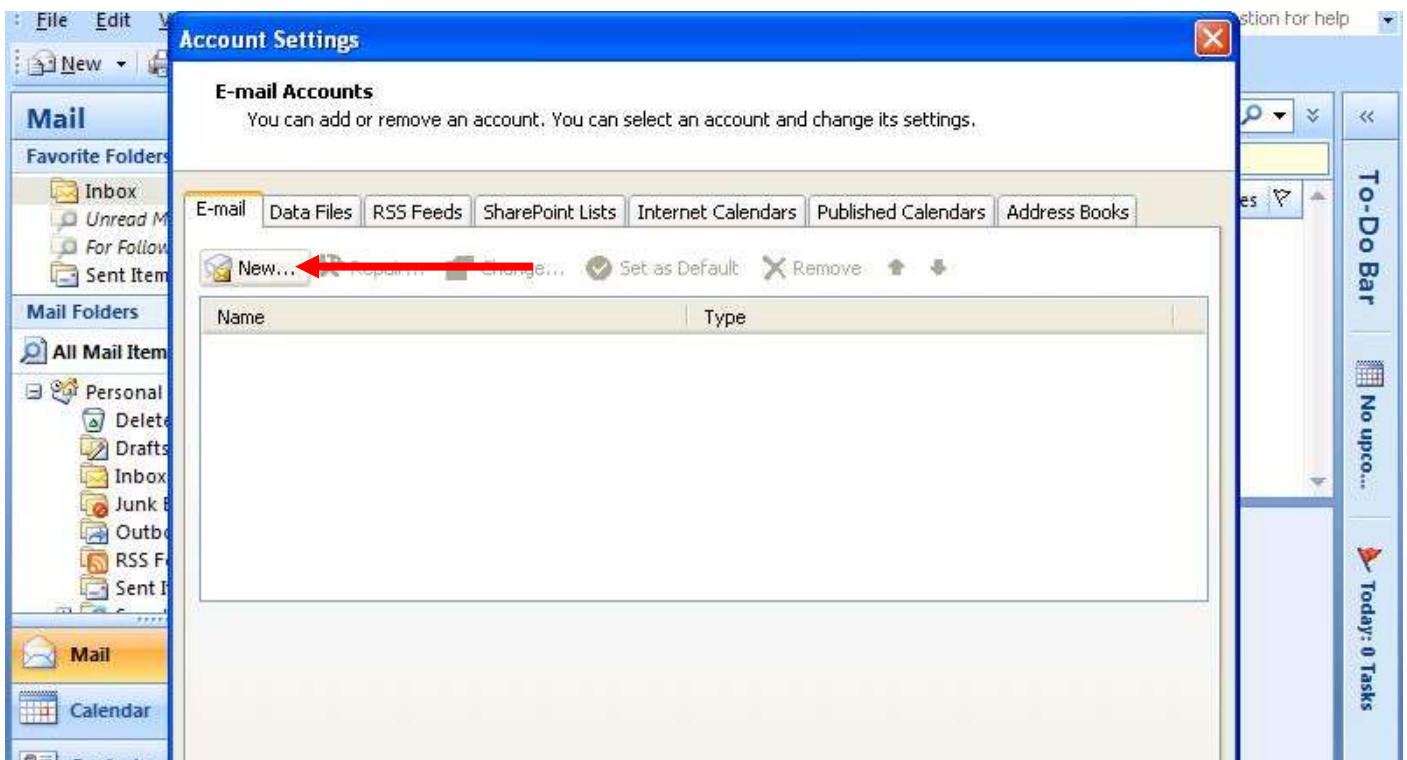


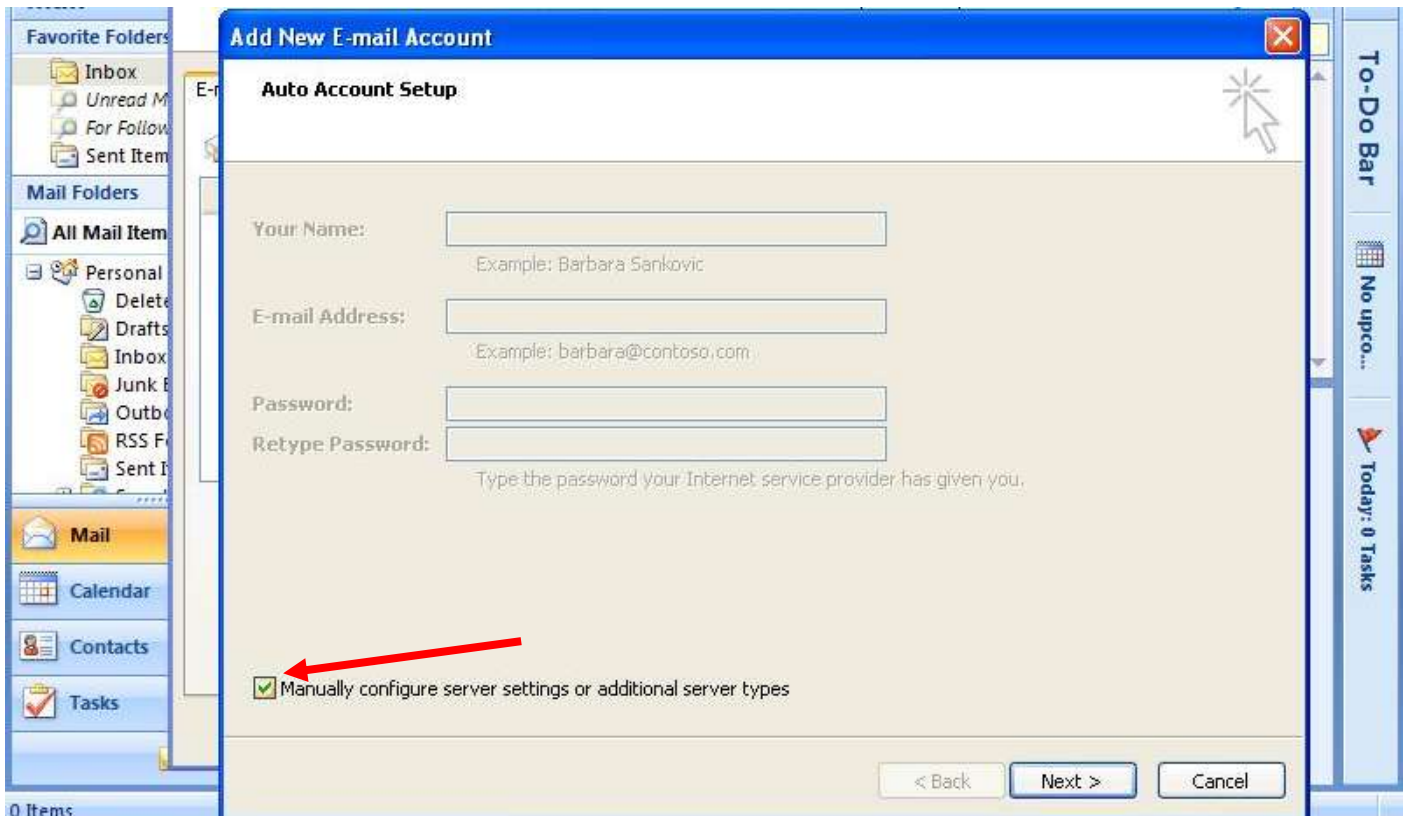
# Outlook 2007 Setup – Linux Hosting:



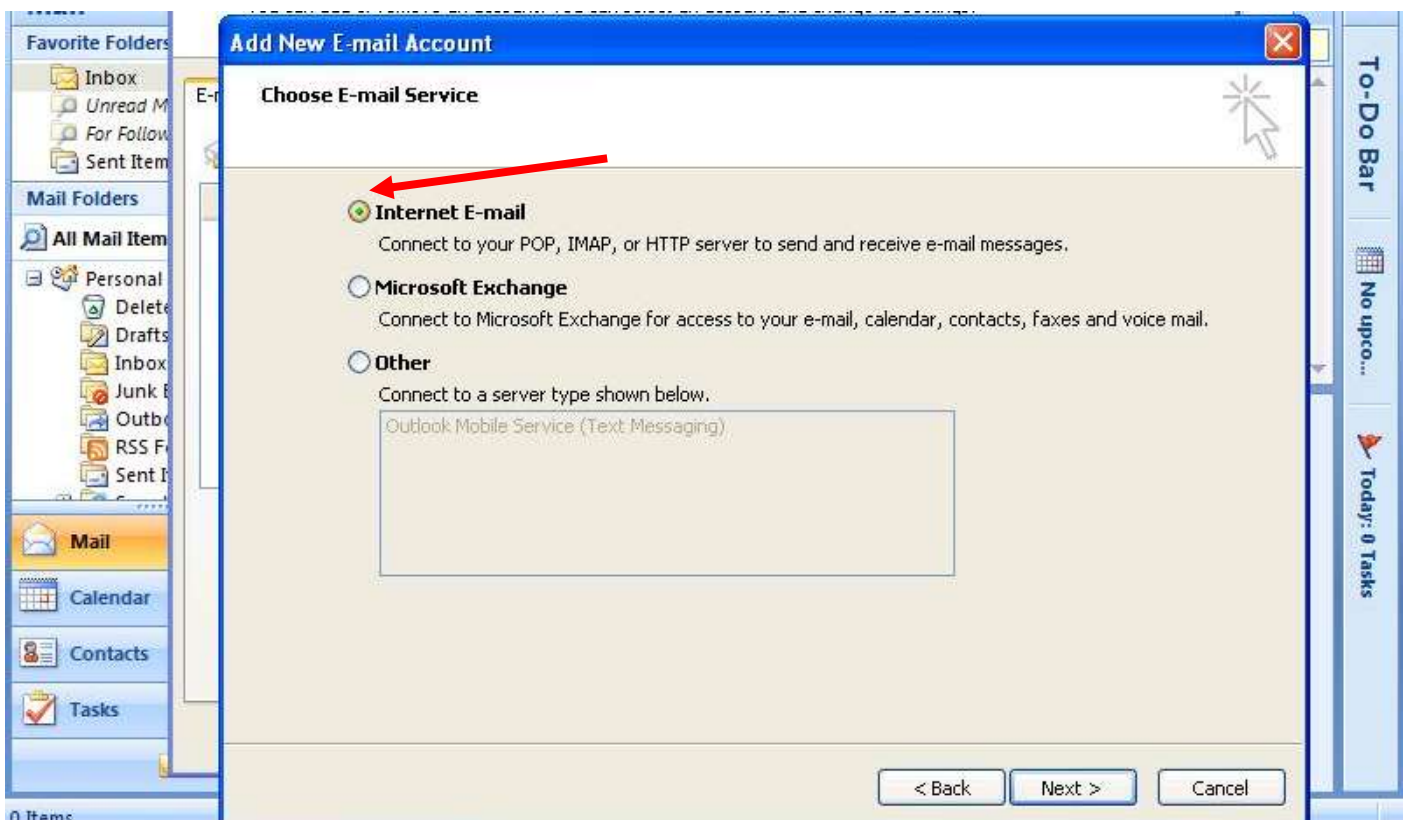
Open Outlook 2007. Once opened, go to the TOOLS menu and click on ACCOUNT SETTINGS...



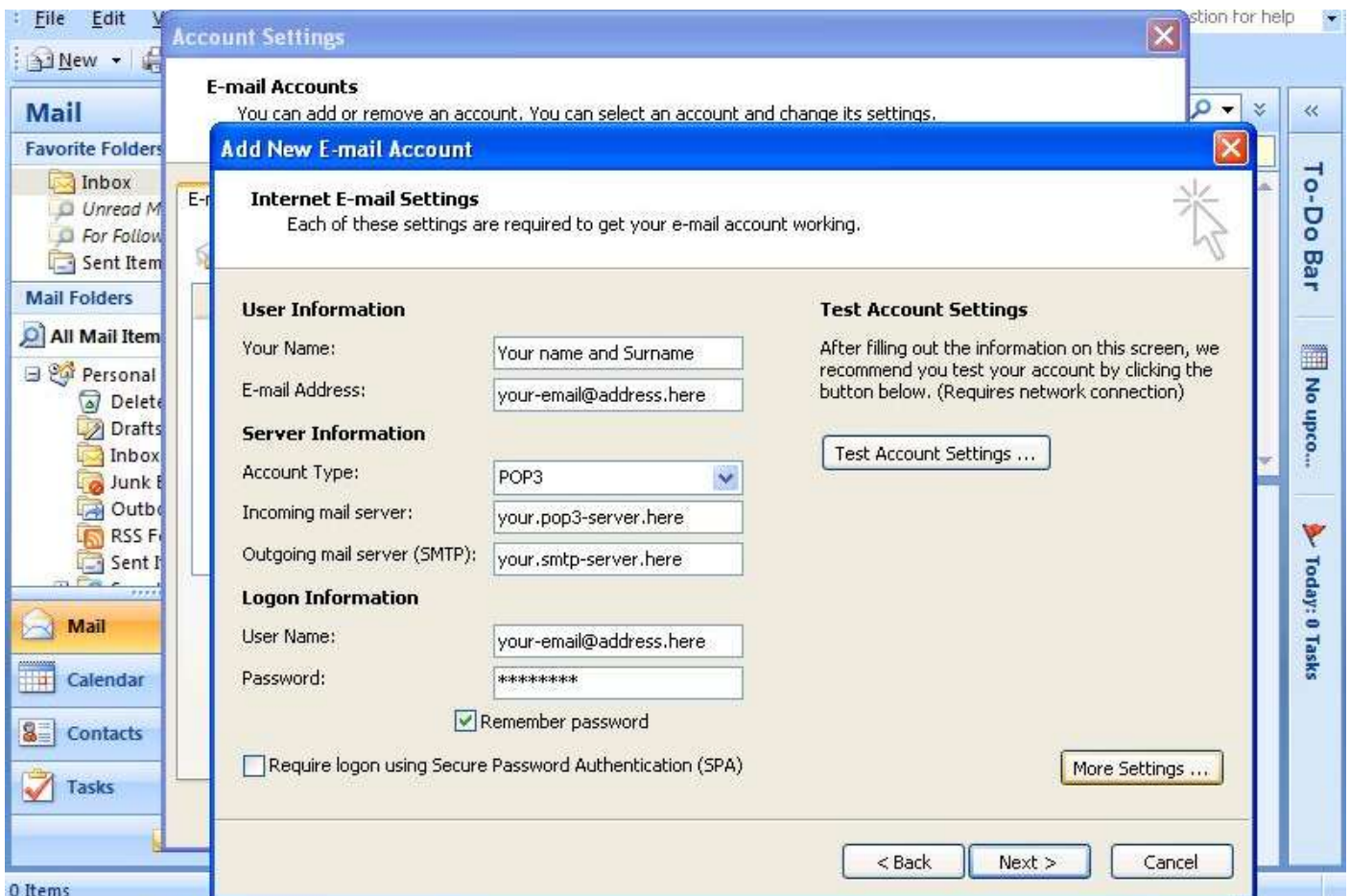
Once the next screen opens, click the 'New...' option under the 'E-mail' tab.



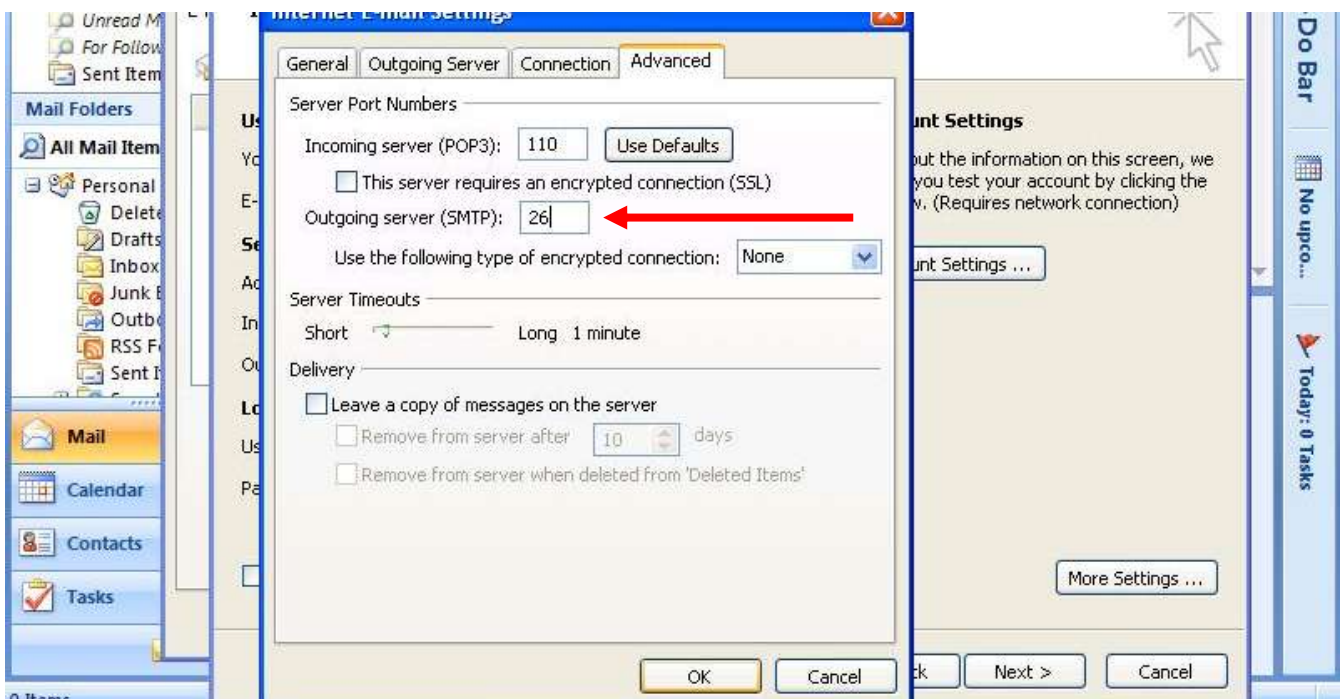
Check the 'Manually configure server settings' box and click 'Next'.



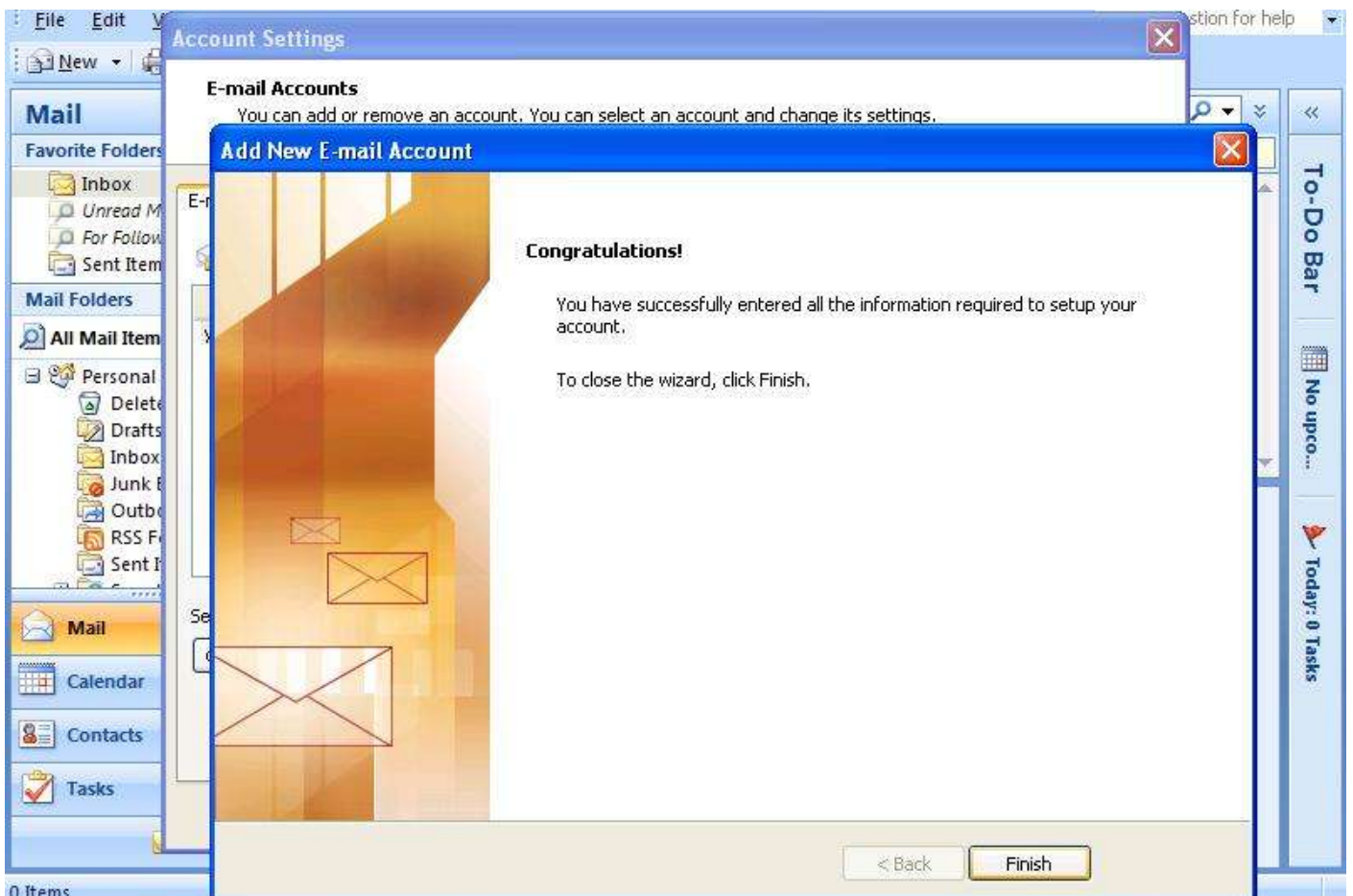
Select 'Internet E-mail' and click on 'Next'.



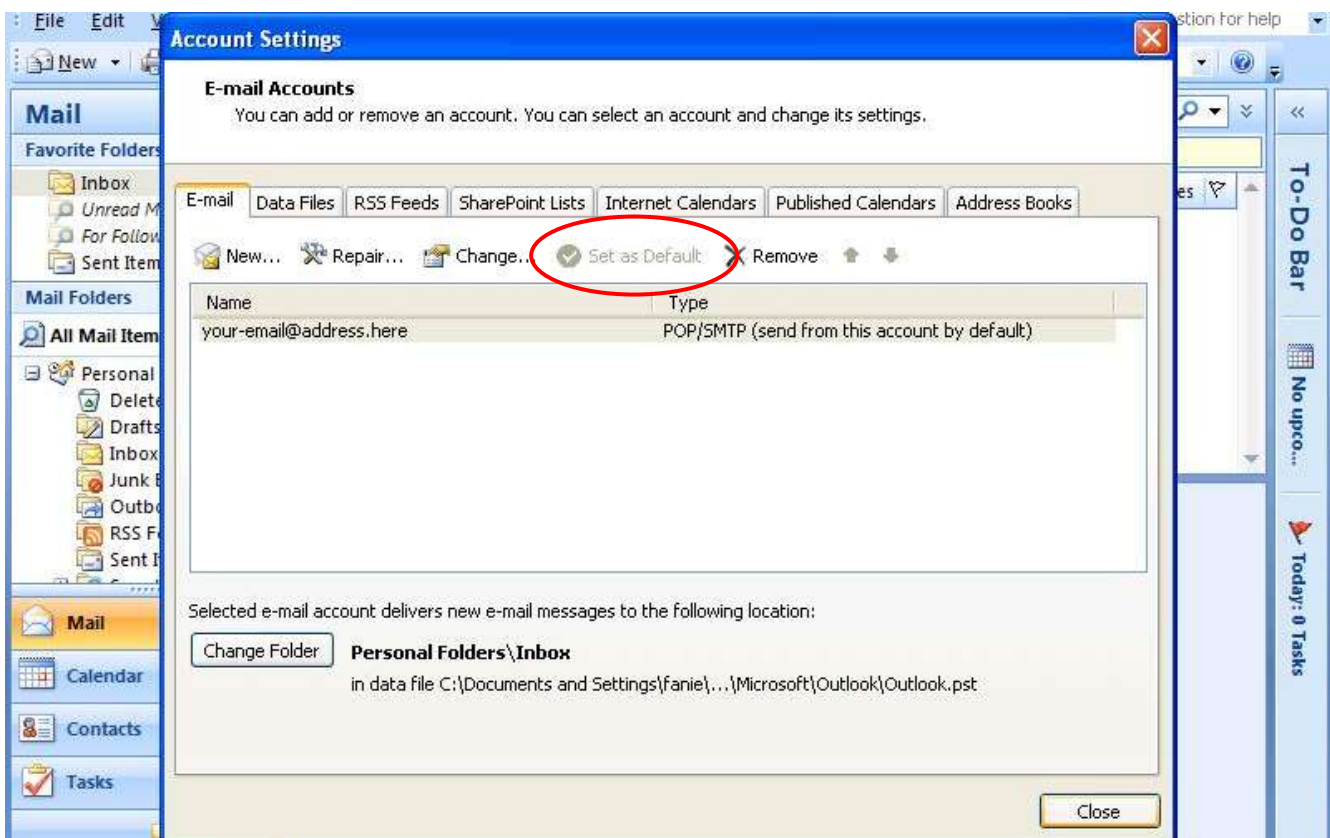
Enter in your Name and Surname (Eg. John Doe), your e-mail address (Eg. user@domain.com), mail server details (Eg. mail.domain.com), your username (this will be your email address) and your password. Also be sure that the Account Type has been set to POP3. When this has all been entered, click on 'More Settings...' to get to the next step.



In the new window that opens, select the ADVANCED tab and change the Outgoing server port from 25, which is the default, to 26. You can click OK once this has been completed to get back to the previous window – from here you may test your new settings by clicking 'Test Account Settings'. If the test succeeds, close the test window and click next on the mail detail screen.



You have now completed the setup of your new e-mail account in Outlook 2003. Click 'Finish' to exit the account settings window.



If you have more than one e-mail account, select the newly created account and click 'Set as Default'. You can now click 'Close' to exit out of your the account settings.