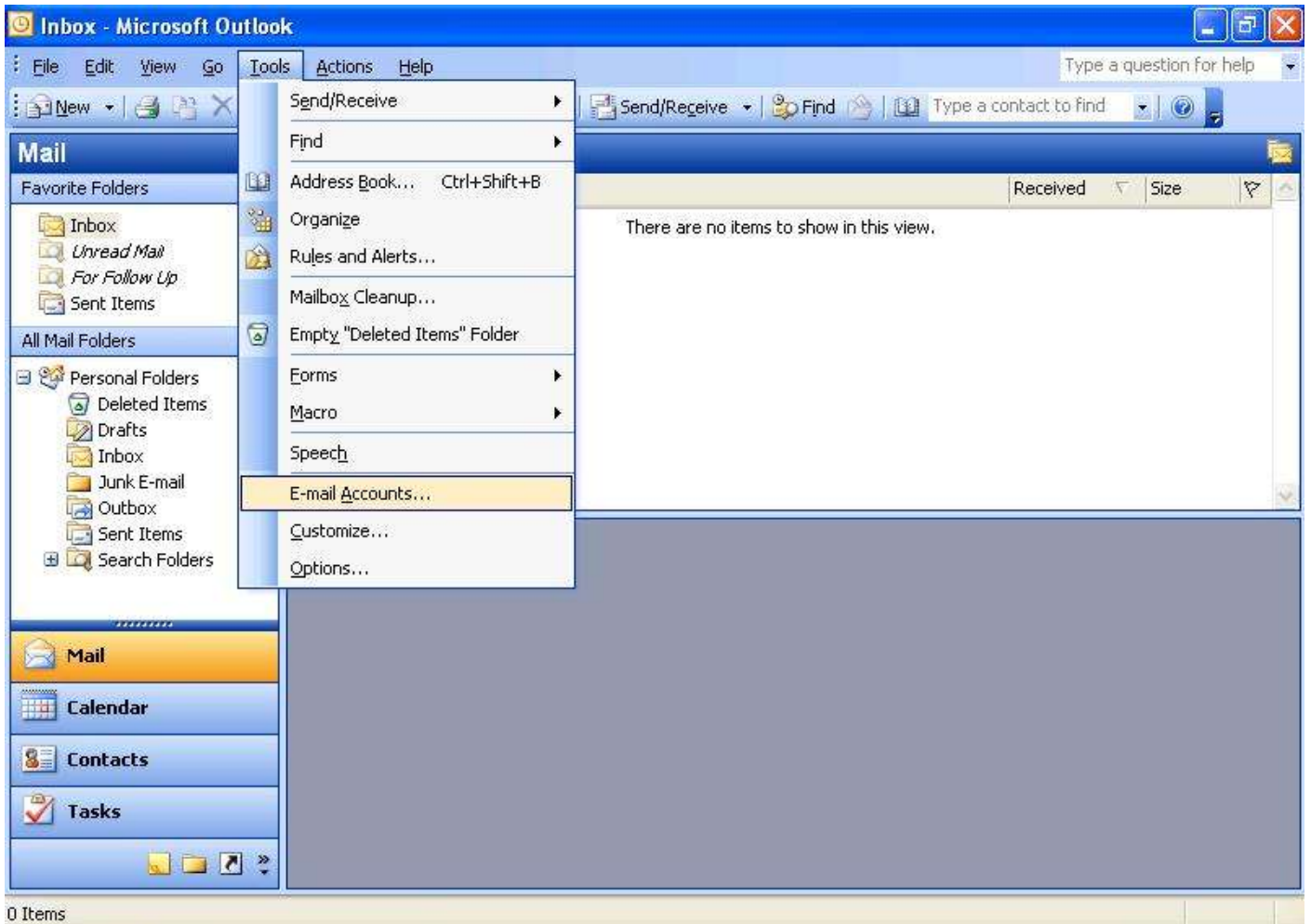
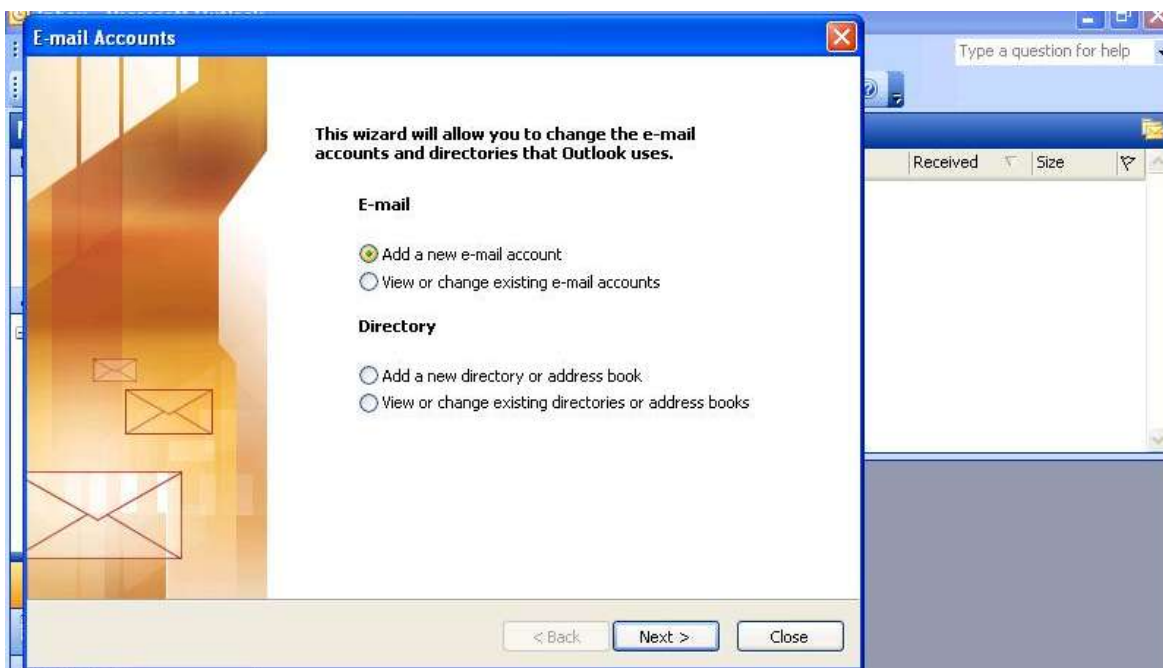


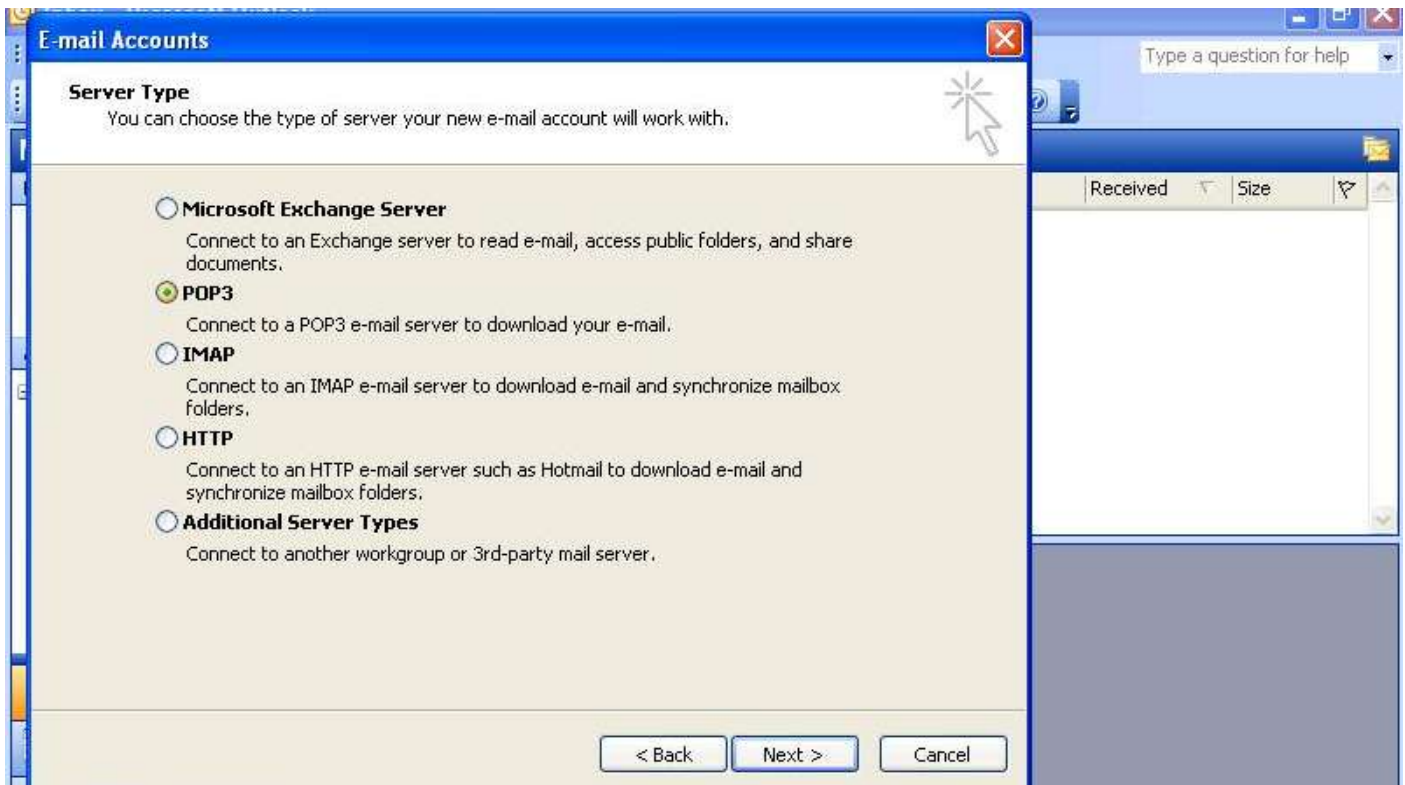
Outlook 2003 Setup – Linux Hosting:



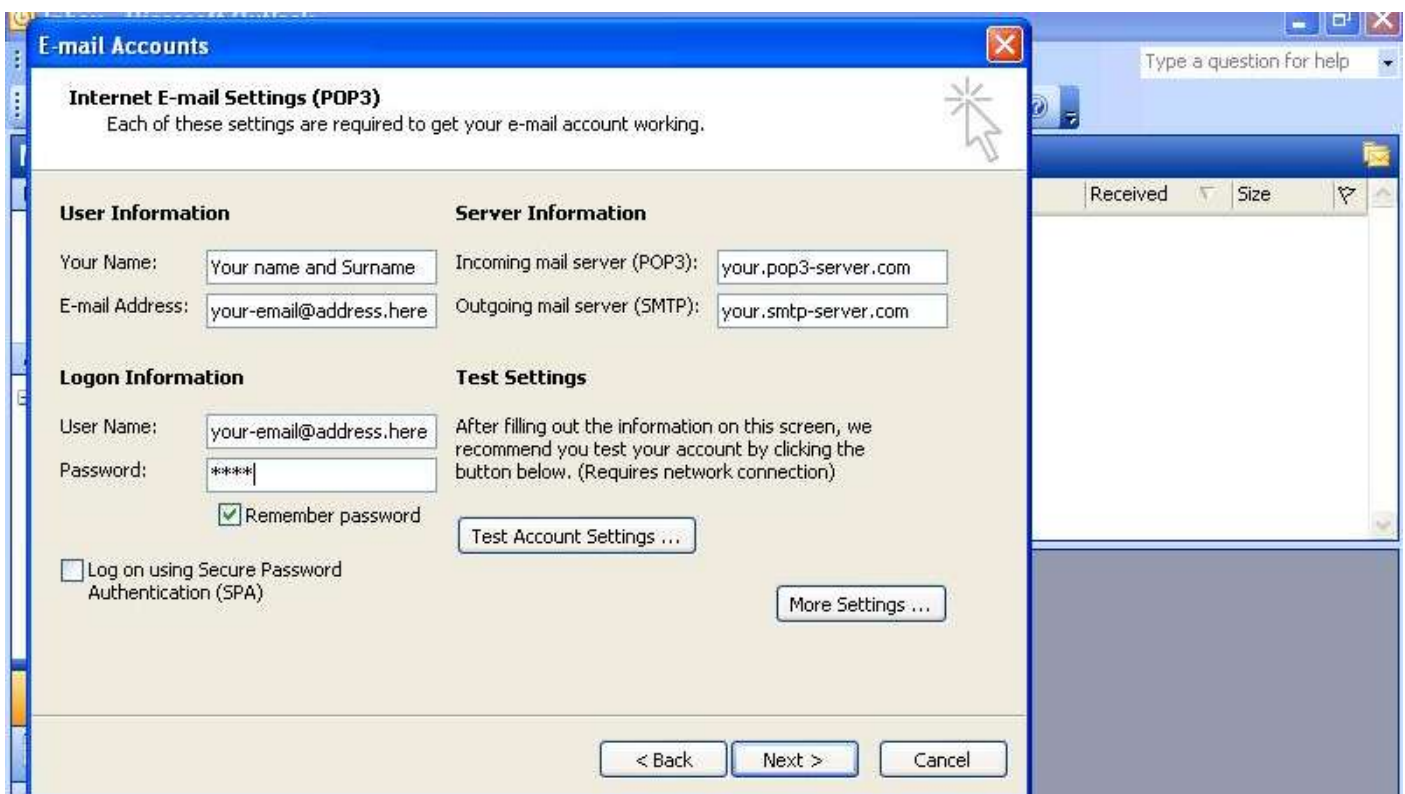
Open Outlook 2003. Once opened, go to the TOOLS menu and click on E-mail ACCOUNTS...



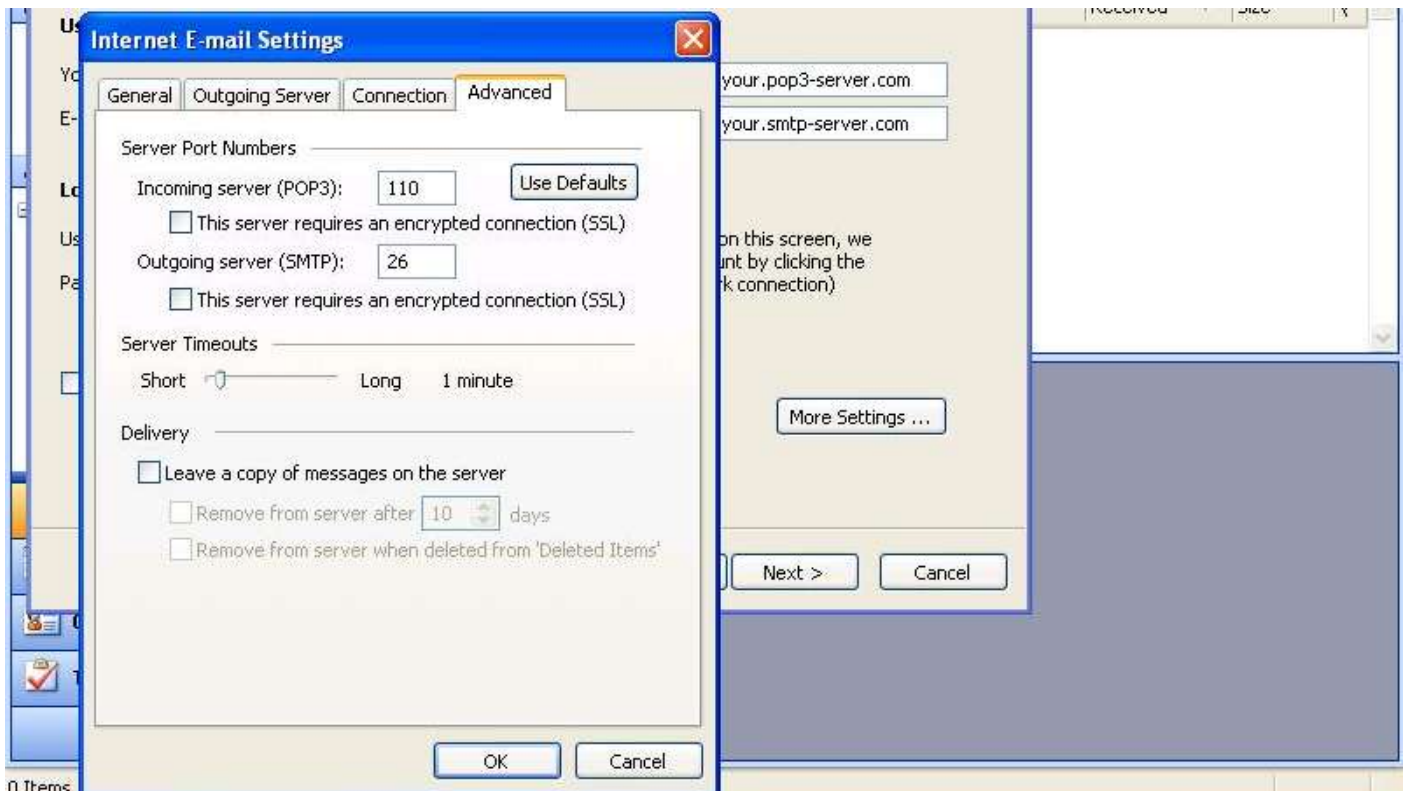
Once the next screen opens, make sure that 'Add a new e-mail account' is selected and then click on NEXT.



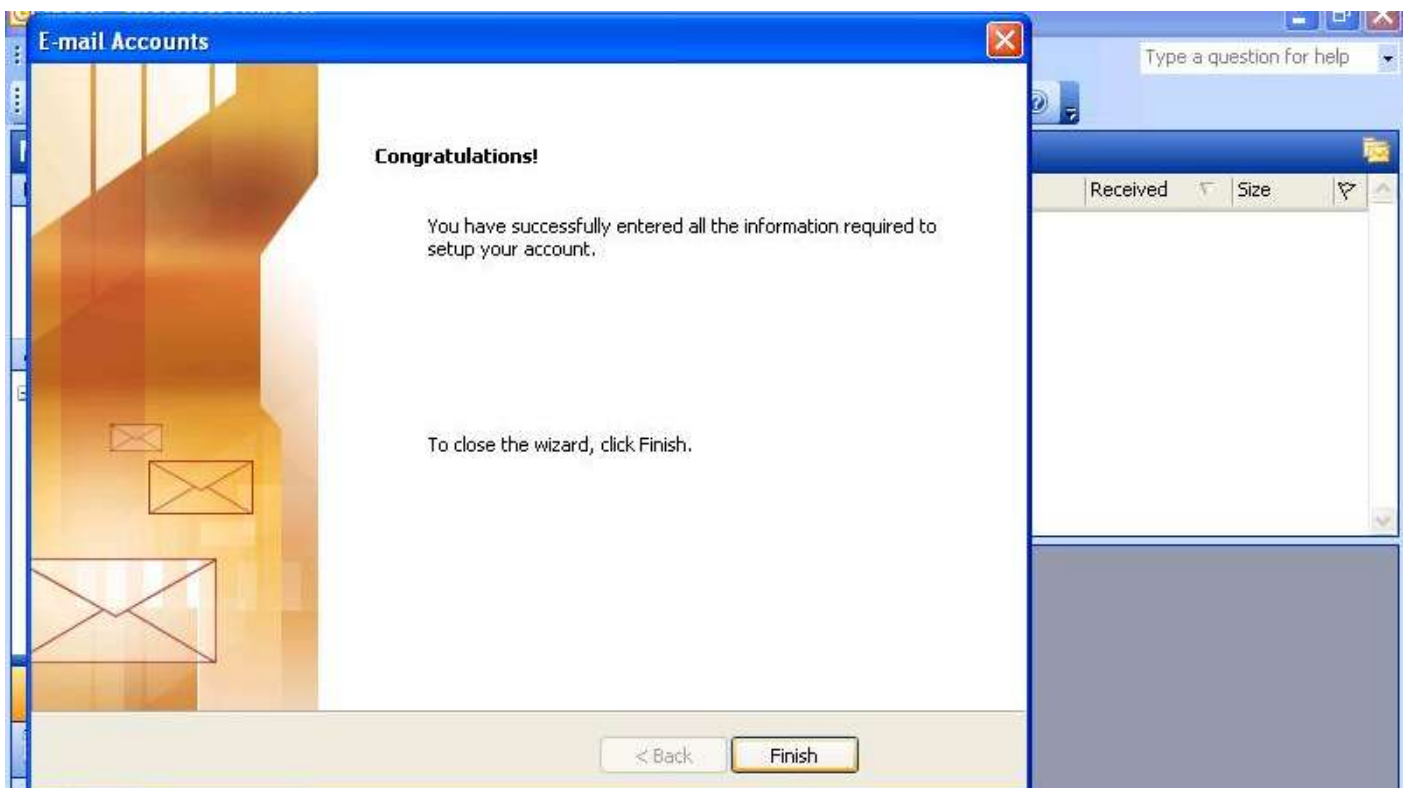
Select POP3 as your mail server type.



Enter in your Name and Surname (Eg. John Doe), your e-mail address (Eg. user@domain.com), mail server details (Eg. mail.domain.com), your username (this will be your email address) and your password. When this has all been entered, click on 'More Settings... ' to get to the next step.



In the new window that opens, select the ADVANCED tab and change the Outgoing server port from 25, which is the default, to 26. You can click OK once this has been completed to get back to the previous window – from here you may test your new settings by clicking 'Test Account Settings'. If the test succeeds, close the test window and click next on the mail detail screen.



You have now completed the setup of your new e-mail account in Outlook 2003. Click 'Finish' to exit out of the setup windows.